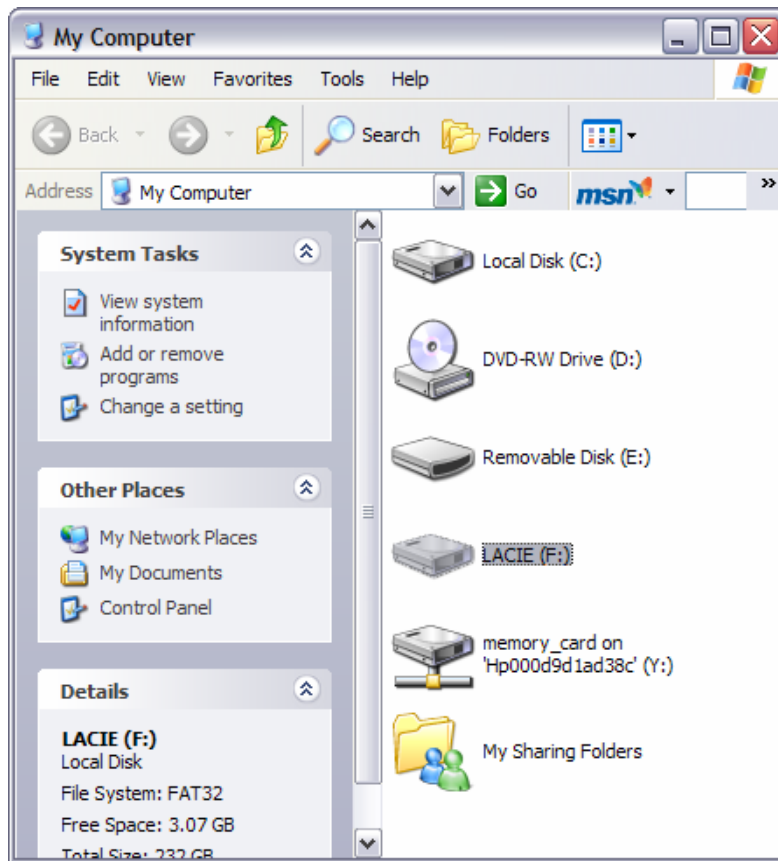
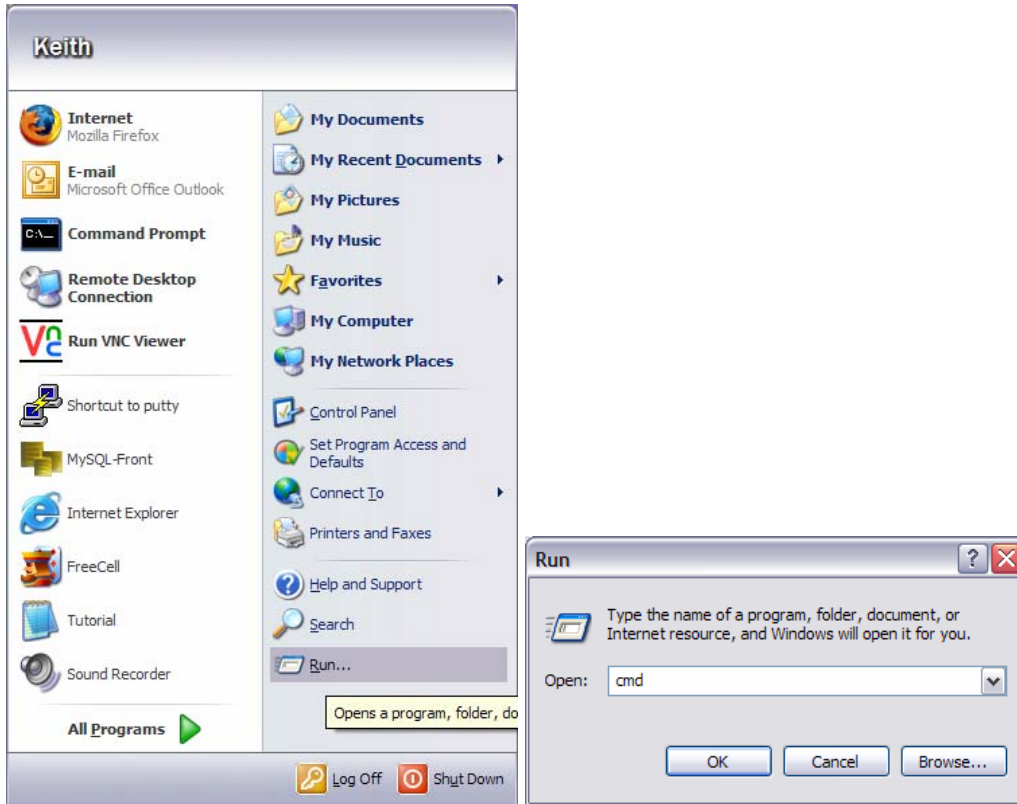


- 1) Connect the Content Backup Hard Drive to the Client's Home Computer, Windows will recognize and prompt you accordingly

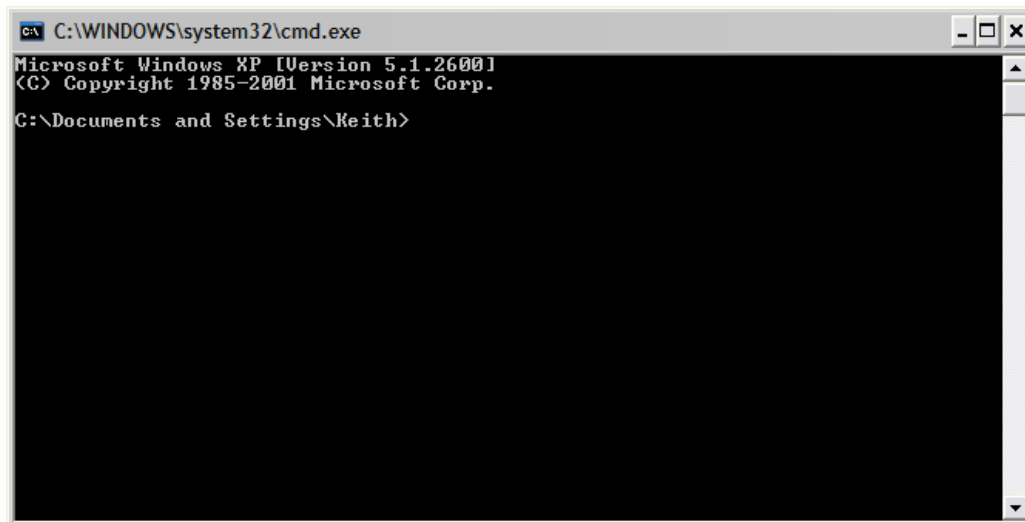


- 2) Select and note the drive letter for the LaCie (?) (You will need this later).
- 3) In the root folder of the LaCie you will find a utility to do the backup from the series 1 to the Hard drive, do not open at this time.

4) Open a command prompt by clicking START -> RUN type in **cmd**.



5) Select Ok, The Following window should appear.





Elan Series 1 Back Up

6) Type the drive letter assigned to the LaCie (?)(in the example below f:).

```
Command Prompt
Microsoft Windows XP [Version 5.1.2600]
(C) Copyright 1985-2001 Microsoft Corp.
C:\Documents and Settings\Keith>f:
```

7) Press Enter.

```
XiVA Server Utilities 2.0
F:\>_
```

Terra-San

111 East Avenue, Suite 335
Norwalk, Ct. 06851

Telephone: 866.807.4754
Facsimile: 203.604.0222



Elan Series 1 Back Up

- 8) Enter `ssutil -backup (drive letter of the LaCie) -S ipaddress_of_via`
- 9) Example `ssutil -backup F -S 10.10.11.31`.

```
XiVA Server Utilities 2.0
F:\>ssutil -backup F -S 10.10.11.31
```

- 10) When the backup is complete send the kit to Terra-San.

Terra-San

111 East Avenue, Suite 335
Norwalk, Ct. 06851

Telephone: 866.807.4754
Facsimile: 203.604.0222