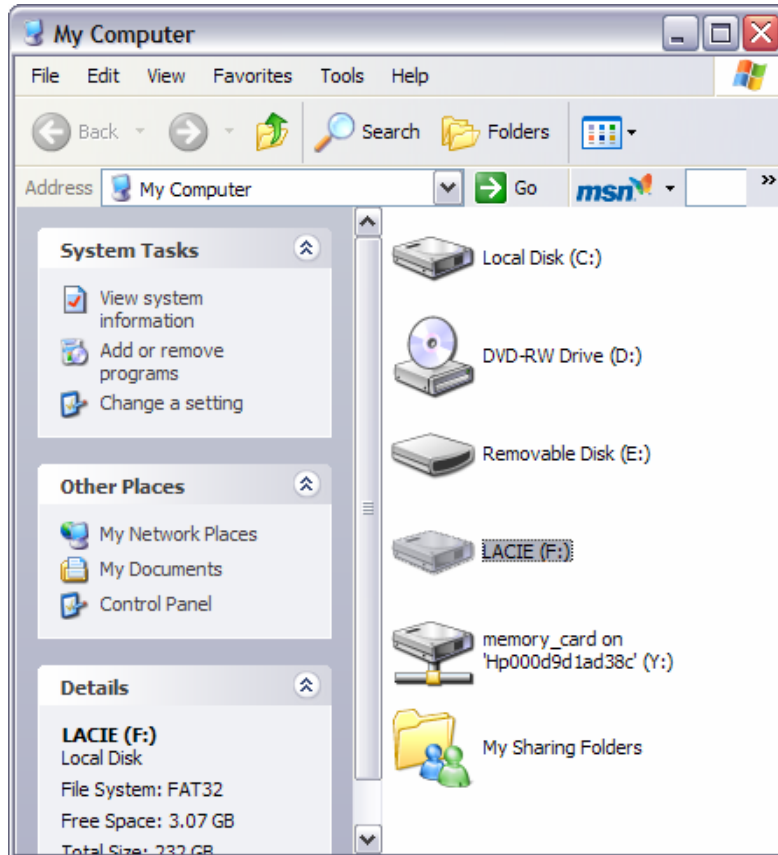
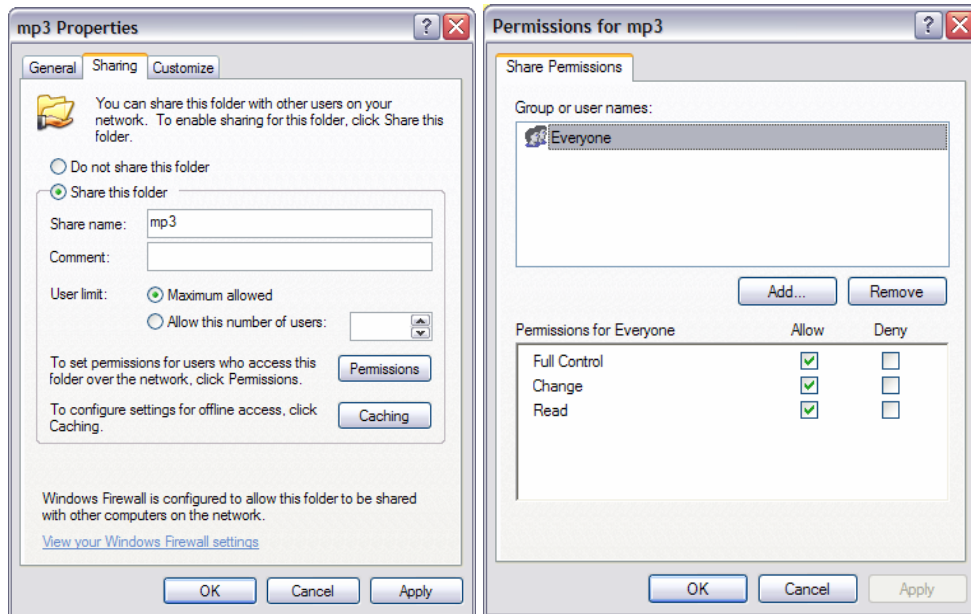


- 1) Connect the Content Load Hard Drive Home Computer, Windows will recognize and prompt you accordingly



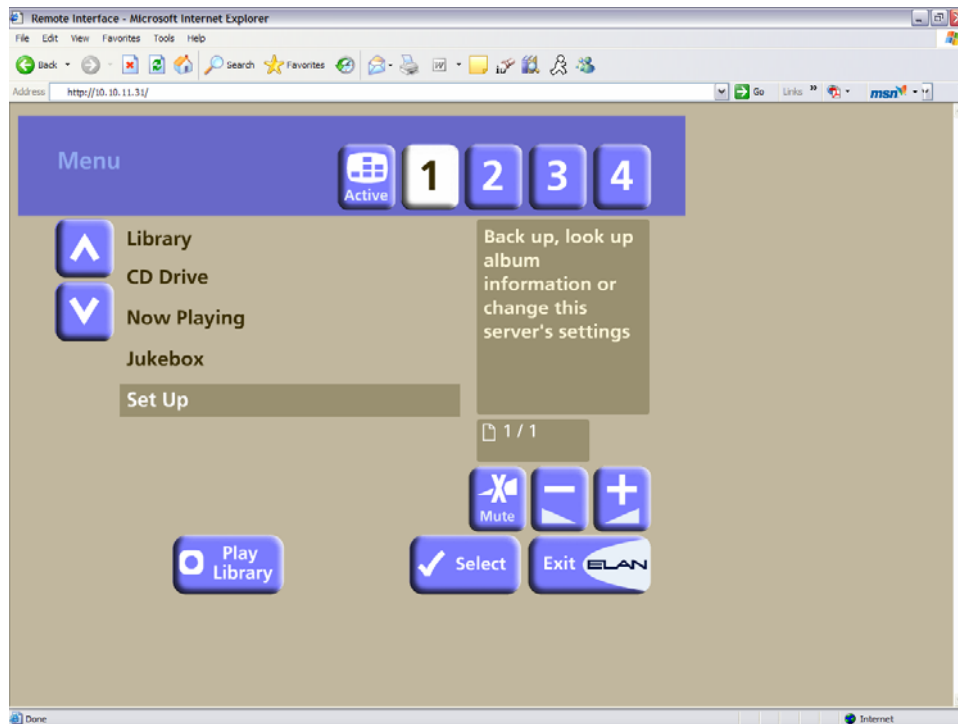
- 2) Select and note the drive letter for the LaCie (?) (You will need this later).
- 3) Now create a folder you wish to Back up your collection to (from your media server) Name it something like (MP3, WAV- etc).
- 4) Share the folder on the network by Right clicking on the folder, then select the sharing tab.

5) Then select the Permissions button and ensure it looks like the one below.



6) Obtain the ip address of the Via!Dj from the front panel for use in the next Step (Consult Users Manual If Necessary).

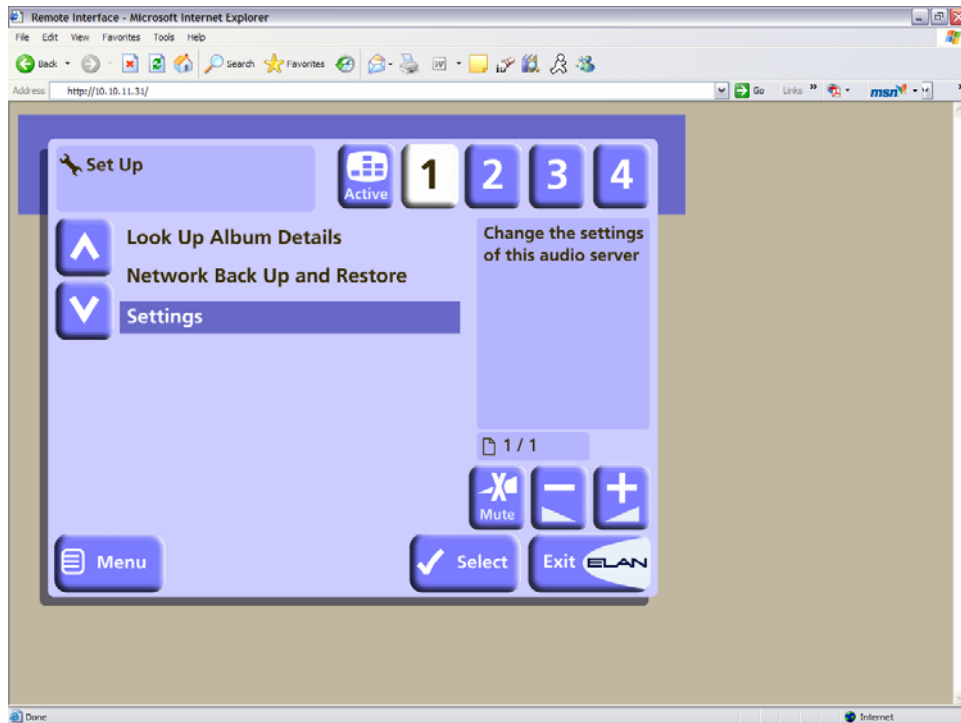
7) Once this is done open a browser and enter the address of the Via.



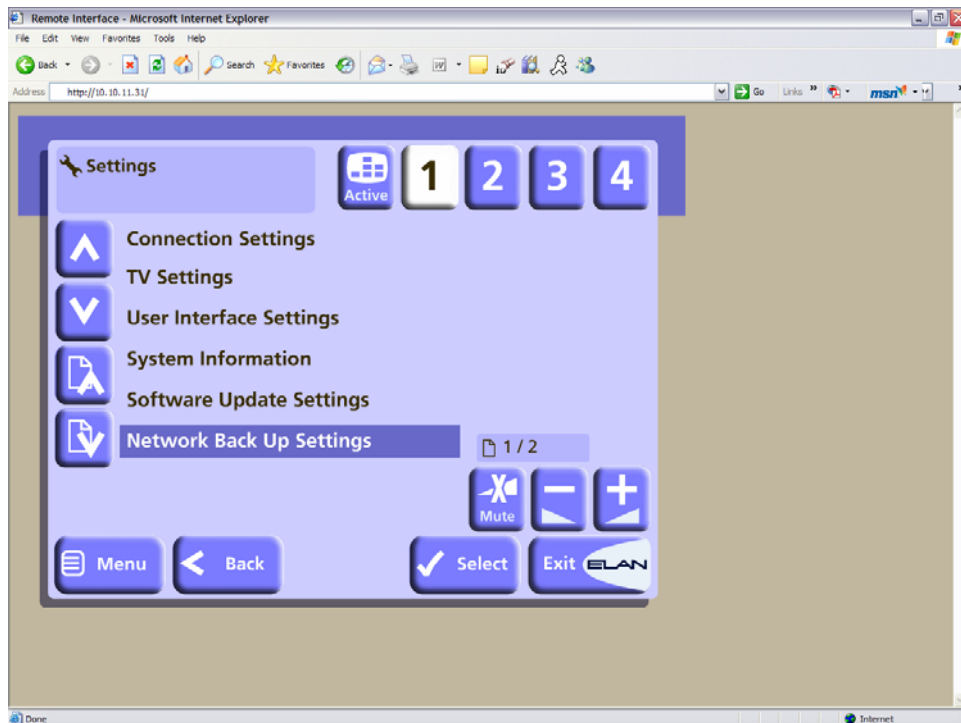


## Elan Series 2 Back Up

8) Select Set up.



9) Select settings.



Terra-San

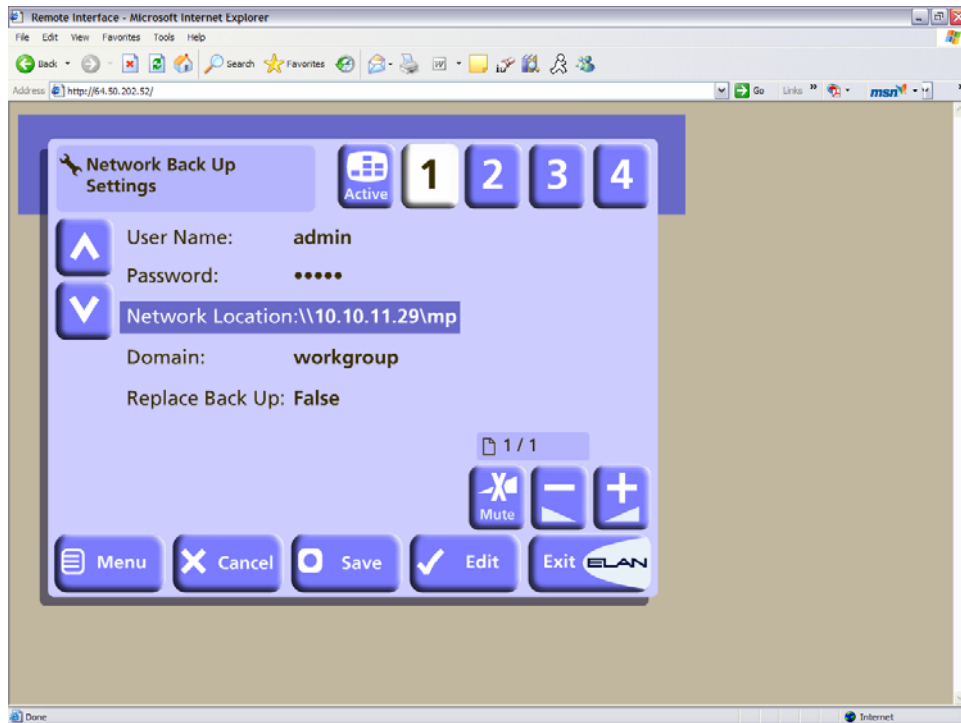
111 East Avenue, Suite 335  
Norwalk, Ct. 06851

Telephone: 203.604.0180 866.807.4754  
Facsimile: 203.604.0222

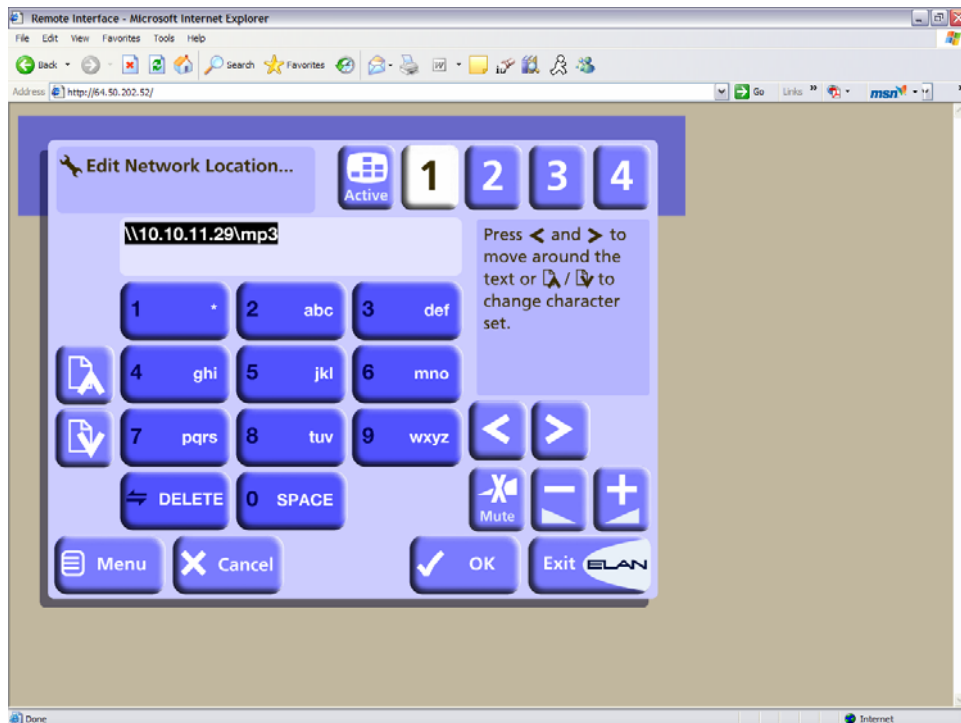


# Elan Series 2 Back Up

10) Select Network Back Up Settings.



11) Select each option in and change to your specific information.



Terra-San

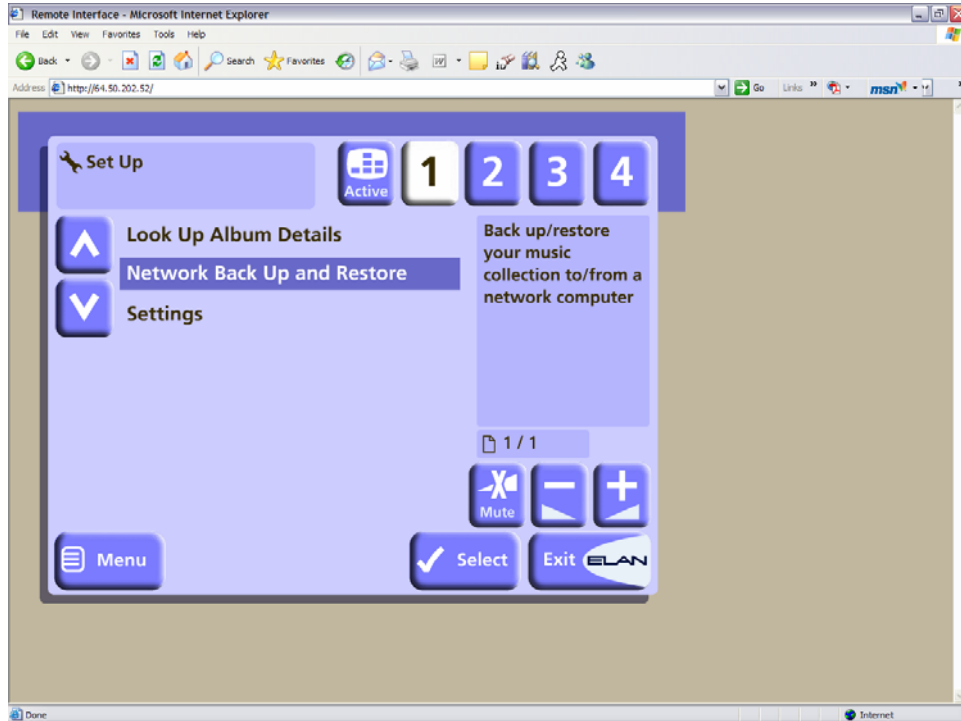
111 East Avenue, Suite 335  
Norwalk, Ct. 06851

Telephone: 203.604.0180 866.807.4754  
Facsimile: 203.604.0222



## Elan Series 2 Back Up

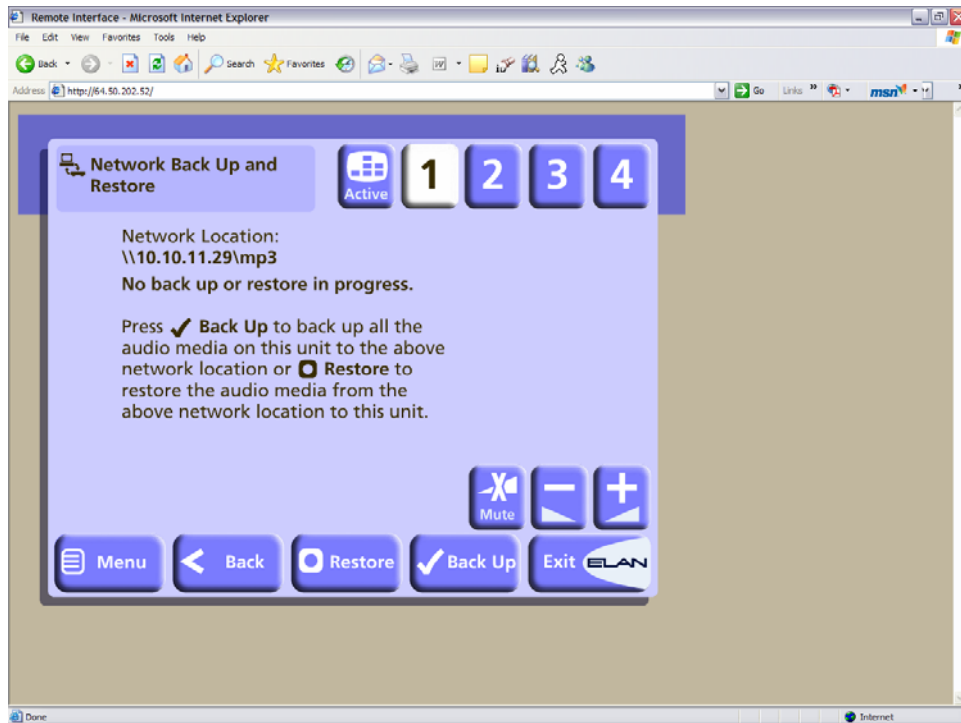
- 12) When you are done with each item Select OK.
- 13) Then when you are completely done Select Save.
- 14) Select Menu then Set Up again.





## Elan Series 2 Back Up

15) Select Network Back Up and Restore.



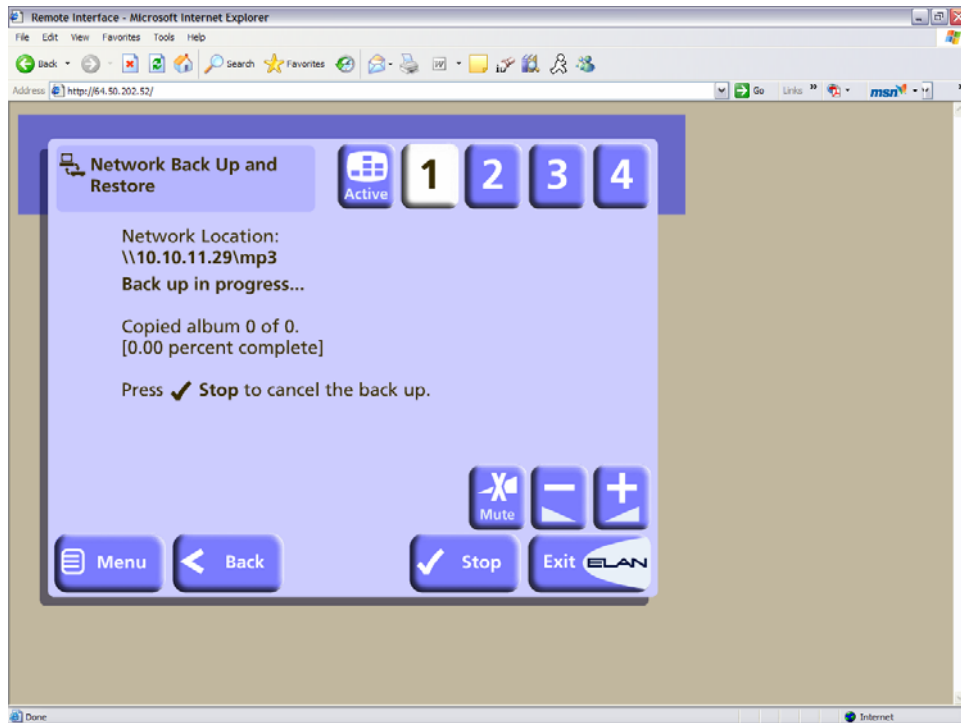
16) The screen should look like the one above with your information.

Terra-San

111 East Avenue, Suite 335  
Norwalk, Ct. 06851

Telephone: 203.604.0180 866.807.4754  
Facsimile: 203.604.0222

17) Select Back Up.



18) Your screen should look like the one above.

19) When Complete send the kit to Terra-San.