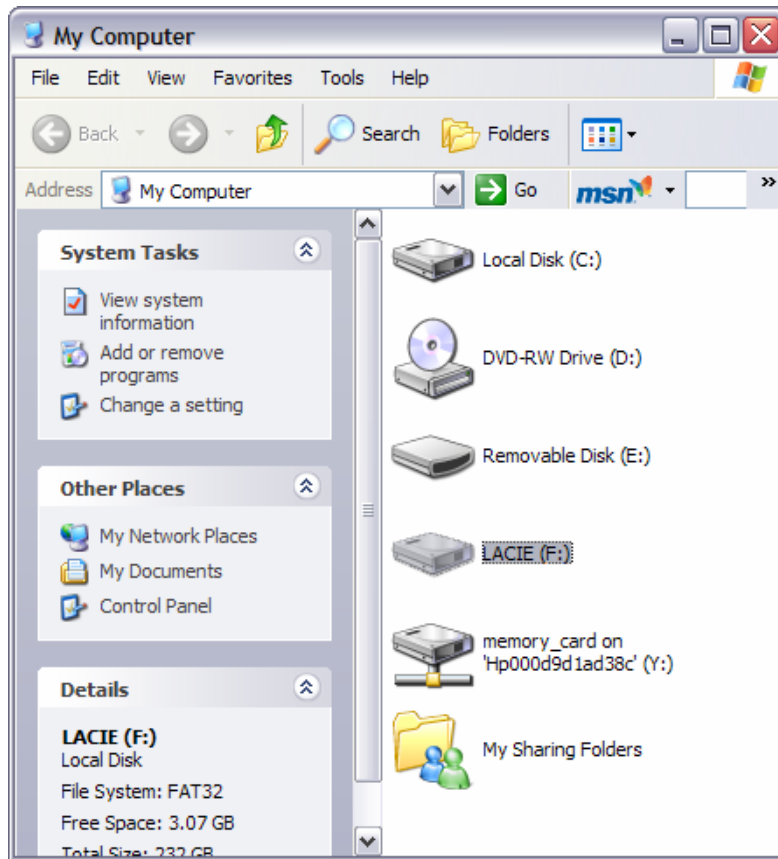




Elan Series 1 Restore

- 1) Connect the Content Load Hard Drive Home Computer, Windows will recognize and prompt you accordingly



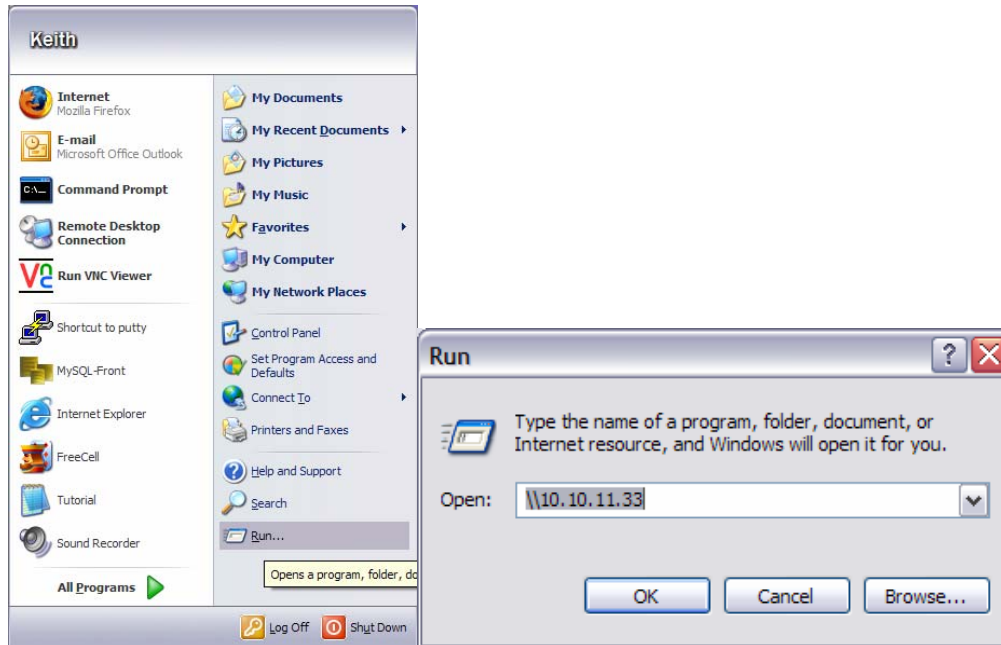
- 2) Select and note the drive letter for the LaCie (?) (You will need this later).
- 3) Obtain the ip address of the Via!Dj from the front panel for use in the next Step (Consult Users Manual If Necessary).

Terra-San

111 East Avenue, Suite 335
Norwalk, Ct. 06851

Telephone: 203.604.0180 866.807.4754
Facsimile: 203.604.0222

- 4) Open a window to the Elan Via!Dj by clicking START -> RUN, in the space after Open: type in The address of the Via Obtained in Step 3. As an example \\10.10.11.33 “Do not for get the two \\”. See Below.

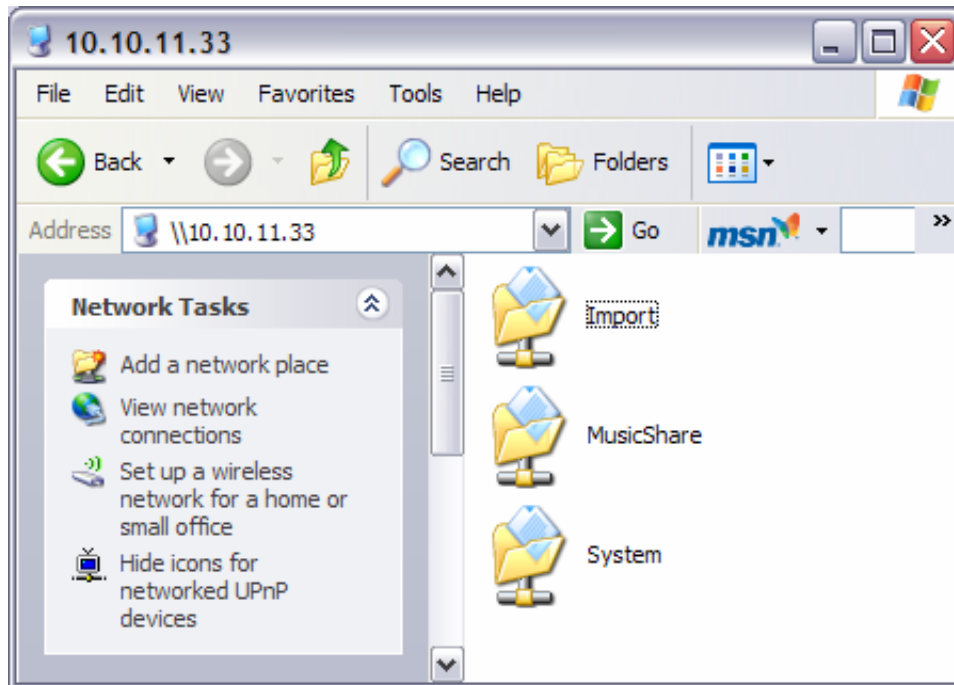


- 5) Select Ok.

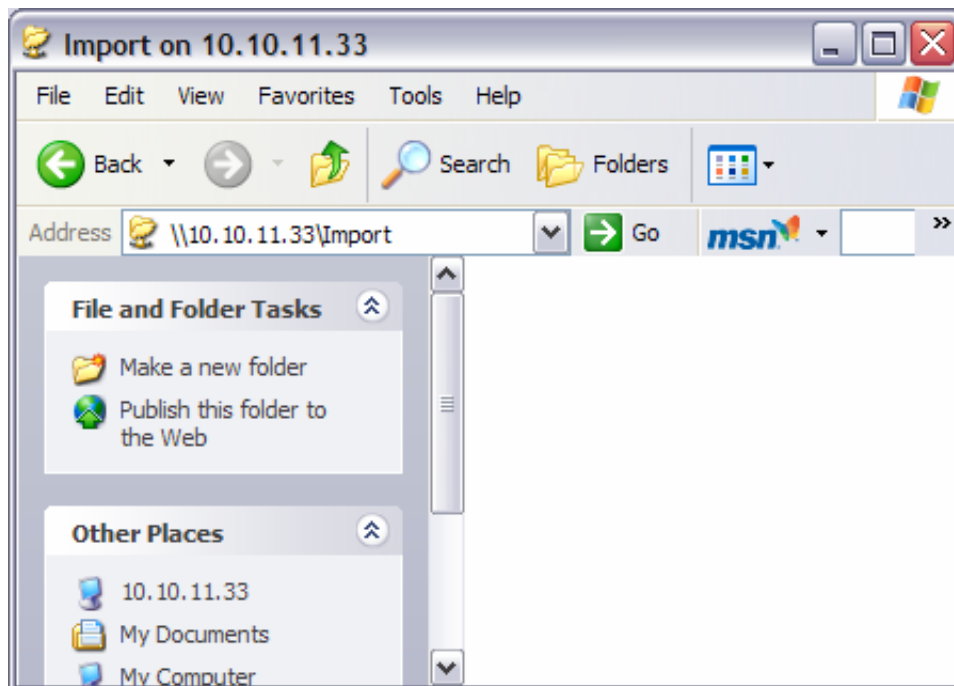


- 6) After you enter the User name and Password (Both elanviadj) Select OK.

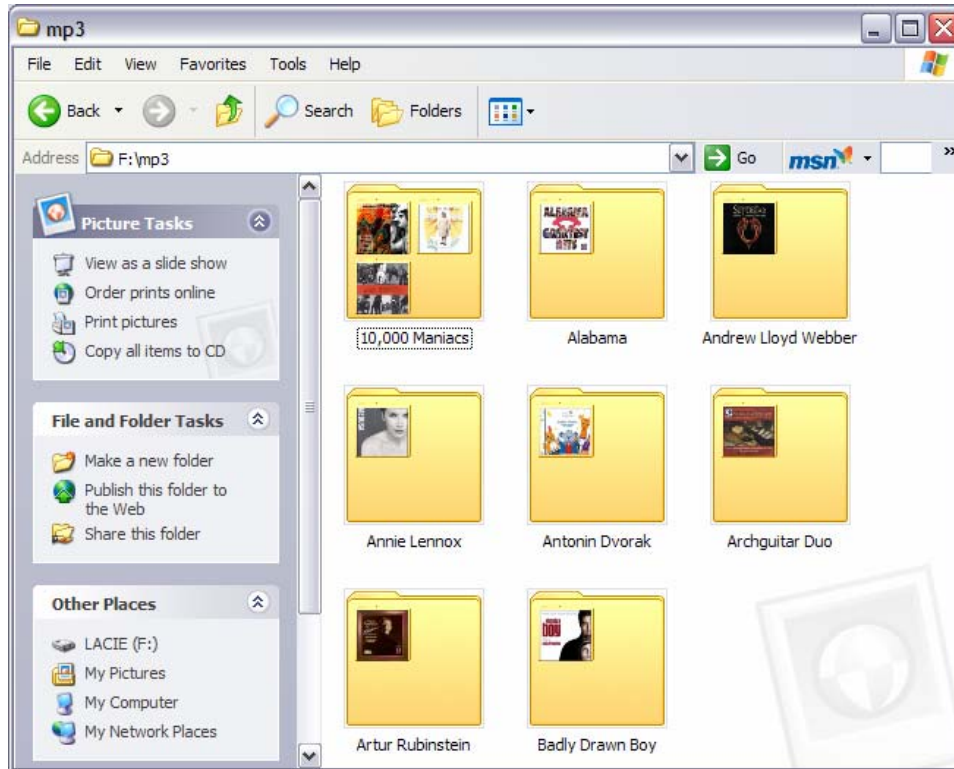
7) The following screen should display on the computer.



8) Select Import.



- 9) In the Lacie window select the folder which contains the format you want to load to the Via.



- 10) Press “CTRL A” to select all then “CTRL C” to Copy the files.

- 11) Select the Import window from Step 5, then Press “CTRL V” to paste the contents to the Via. (This can take time depending on how many albums are in the collection).